



Kitchell
MEMORIAL PRESBYTERIAN CHURCH

Phone: 973-887-6939 Hours: Mon-Thurs 9AM-1PM
Email: office@kitchellchurch.org or hallred@kitchellchurch.org

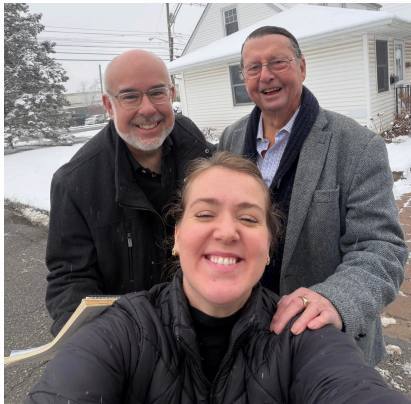
February 2026 Newsletter

Past Event Photos

Did you get snapped at our last event? Check out the photos below and also our social media page to see if you were snapped!

Follow and Tag us in pictures of your own too!

@kitchellchurch



General Announcements & Special Dates

- The office will be closed **Monday, February 16th** for Presidents' Day.
- The **Souper Bowl of Caring** is a nationwide youth-led movement that fights hunger by collecting food and donations around the time of the Super Bowl. It started in 1990 with a simple idea: encourage people to give to local charities while enjoying the big game. Join us in making a difference this Super Bowl season! We are collecting cash and coins on "Souper Bowl" **Sunday, February 8th**, to support the charity NourishNJ. NourishNJ is a community organization that offers free services to help people in need with food, housing, health and more. Our church school kids will be posted at the doors at the end of worship to collect your donations in their soup pots. Let's turn the spirit of the big game into a victory for those in need!
- Ash Wednesday will be on **February 18th**. Drive thru Ashes will be available from 12-2PM.
- Parish Life is hosting another Family Friendly, BYOB **Game Night, February 27th** at 6:30PM. We will have pizza, snacks, drinks, and dessert. Bring your favorite board game to share or come and play one of the ones we will provide. Bring your friends and Game ON!
- Job Opening: Calvary Presbyterian Church in Florham Park is seeking a dependable and organized Office Administrator. If you or someone you know is detail-oriented, welcoming, and enjoys supporting a faith community, we encourage you to learn more or apply by contacting Pastor Carie Stanley-Morgan at: pastorcarie25@gmail.com.

Let us **PRAY** for:

- Melody Bjorklund
- Pam's health and Souk as he recovers from surgery.
- Our nation and its leaders.
- Our Session members as they continue to plan for the future.
- That KMPC would find a Christian Educator for our growing ministry
- Emma as she continues to improve from her surgery.
- Phyllis, as she recovers from her oral surgery.

February greets us each year with pink hearts, candy aisles, and reminders to buy something sparkly for someone we love. But before Valentine's Day became a celebration of romance, it was rooted in a much older and braver story.

St. Valentine was a third-century priest who lived under the Roman Empire. According to tradition, he defied imperial orders by performing marriages for young couples when marriage was forbidden, believing love and commitment mattered more than unjust laws. For that quiet resistance, Valentine was imprisoned and eventually executed. His story, whether embroidered by legend or not, has always pointed us toward a love that costs something—a love willing to take risks for the sake of others.

That kind of love feels especially urgent right now.

In 2026, we are living in a moment when many of our brown-skinned immigrant neighbors are afraid to leave their homes. ICE raids have created an atmosphere of fear so real that families hesitate to go to the grocery store, take their children to school, or seek medical care. These are not abstract headlines. These are human beings—parents, children, elders—made in the image of God, navigating daily life with anxiety many of us will never have to carry.

So when Jesus tells us to “love your neighbor as yourself,” the question becomes harder and more specific. Who is my neighbor? And what does love look like when fear shapes their every decision? How are we called to respond?

Love, at this moment, may not look like chocolates or roses. It might look like paying attention. Listening without fixing. Refusing dehumanizing language. Showing up when it's inconvenient. Advocating when it feels uncomfortable. Love might look like creating spaces where people are safe and not alone.

The early church didn't grow because it was polite or quiet. It grew because people lived their faith out loud—sharing meals across boundaries, protecting the vulnerable, and insisting that God's love was bigger than empire, borders, or fear. St. Valentine's witness reminds us that love has always been a little bit subversive.

As we move through this February, my hope is that we resist the temptation to sentimentalize love and instead practice it. Real love is active. It notices who is missing. It asks who is afraid. And it dares to believe that our small acts of courage—our presence, our compassion, our solidarity—matter. May we be a church that loves boldly. Not just with words, but with our lives. Grace and peace,

 Pastor Hannah

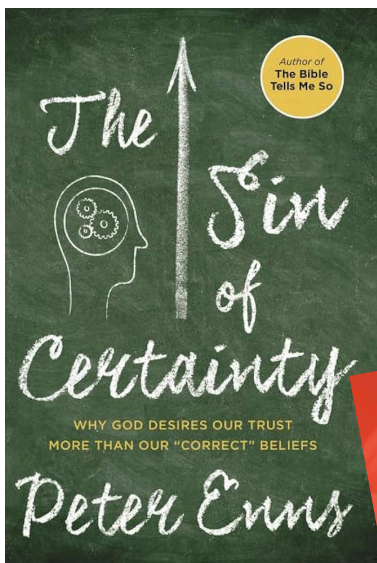
Theme for Lent 2026:



“When Seeing Isn’t Believing”

This Lent, we will explore the tension between seeing and believing. The Scriptures of Year A remind us that faith is not the same as certainty. Again and again, Jesus encounters people who see clearly yet refuse to trust or believe—and others who believe fully without ever seeing or understanding. Lent invites us into that honest space where answers are incomplete, outcomes are uncertain, and faith is formed not through clarity but through relationship. As we journey toward the cross and the empty tomb, we will ask not “Do I have it all figured out?” but “Where am I being invited to trust?” This season, we will practice a faith that stays present, asks real questions, and learns to believe even when we cannot yet see.

Faith is not certainty. Faith is formed through relationship, risk, and response. Faith is an encounter with Jesus-- not in the midst of our comfort zone but out in the world.



For those interested, stay tuned for details about a Lenten book club focusing on the book: “The Sin of Certainty” by Peter Enns.



Kitchell KIDS



Building a foundation of faith with God's LOVE

The Winter weather has been cramping our church school style. We hope to meet this month for the following lessons:

February 1st - Micah 6:1-8; Matthew 5 “The BEE-attitudes”

**February 8th - Matthew 5:13-20; Psalm 112:1-9
“Salt & Light”**

**February 15th - Exodus 24:12-18; Matthew 17:1-9
“Heads in the Clouds” (transfiguration)**

**February 22nd - Genesis 2:15-17; Matthew 4:1-11
“What is Lent? 40 days of Discovery”**

GETTING TO KNOW YOU

in the spotlight with...

We Want You!

Each month, in our church newsletter column “Getting to know you” we feature a fellow worshiper in spotlight—a simple, joyful way to celebrate the wonderful people who make our church family so special.

We are looking for volunteers who would be willing to share a few fun facts about themselves—things others in the congregation might not know!


It’s easy and only takes a few minutes. You can share:

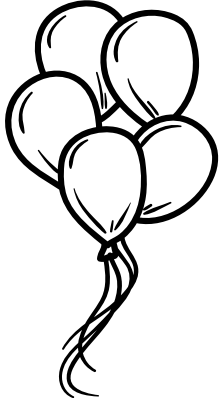
- Your favorite hobbies
- A fun or quirky fact
- A favorite Bible verse
- Something meaningful about your faith journey
- Anything lighthearted that helps others get to know you!

If you’re interested in being featured in an upcoming Spotlight, please contact Patty Wittjohann.

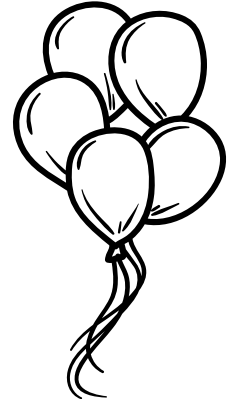
Thank you for helping us build connection, friendship, and community within our church family.

February 2026

Sunday	Monday	Tuesday	Wednesday	Thursday	Friday	Saturday
Senior Choir 9AM Church School 9AM Worship 10AM Property Mtg	2	3	4	5	6	7
Senior Choir 9AM Church School 9AM Worship 10AM "Souper Bowl"	9	10	11	12	13	14  Valentine's Day AA Meeting 9:30AM
15	16	17	18	19	20	21
Senior Choir 9AM Church School 9AM Worship 10AM	Presidents' Day Office Closed	Bible Study 1:30PM Parish Life Mtg 7PM	Drive thru Ashes 12-2PM No Handbell Choir Ash Wednesday			AA Meeting 9:30AM
22	23	24	25	26	27	28
Senior Choir 9AM Church School 9AM Worship 10AM Deacons Mtg 11:30AM		Bible Study 1:30PM Session Mtg 7PM	Handbell Choir 7PM		Game Nght 6:30PM	AA Meeting 9:30AM



February Birthdays



Feb 07th: Pam Hasegawa

Feb 07th: Souk Hasegawa

Feb 10th: Christopher Lanigan

Feb 11th: Jennifer Parker



Kitchell
MEMORIAL PRESBYTERIAN CHURCH