

# December 2025 Newsletter



Kitchell  
MEMORIAL PRESBYTERIAN CHURCH

Phone: 973-887-6939 Hours: Mon-Thurs 9AM-1PM  
Email: [office@kitchellchurch.org](mailto:office@kitchellchurch.org) or [hallred@kitchellchurch.org](mailto:hallred@kitchellchurch.org)

## Past Event Photos

Did you get snapped at our last event? Check out the photos below and also our social media page to see if you were snapped!

Follow and Tag us in pictures of your own too!

@kitchellchurch



## General Announcements & Special Dates

- The **Christmas Toy Drive** Collection has begun and will run through Dec 14th. You can drop gifts off on the table in the Fellowship Hall.
- **Christmas Poinsettias:** An email went out with the order form. Please place your orders by 12/17. Feel free to call or stop by the office if you need help filling it out.
- **Manse Open House Christmas Party - Friday, December 05th at 6:30PM:** All are invited to the Manse for an evening of fellowship, refreshments, and Christmas cheer. We hope to see you there!
- **Communion Sunday** will be on December 07th.
- Sunday, December 07th, is the **East Hanover Winter Festival** and Kitchell will have a booth! If you love this church and want to share that love with others, consider volunteering an hour or two of your time to "man the booth" with Pastor Hannah Faye. We need about 4-6 volunteers from 2PM-4PM or 4PM-6PM. Please let Patty know if you are available & interested.

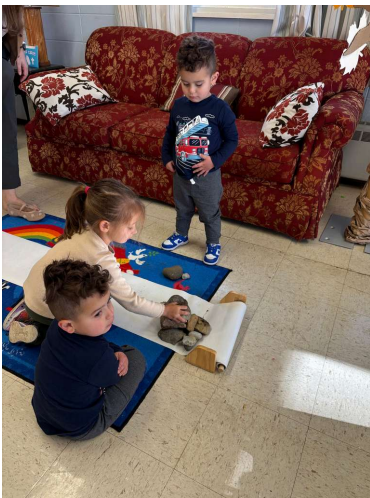


**Kitchell**  
MEMORIAL PRESBYTERIAN CHURCH

Phone: 973-887-6939 Hours: Mon-Thurs 9AM-1PM  
Email: [office@kitchellchurch.org](mailto:office@kitchellchurch.org) or [hallred@kitchellchurch.org](mailto:hallred@kitchellchurch.org)

## General Announcements & Special Dates Continued

- The **Kitchell Tree Lighting** will be on Friday, December 12th at 5:30PM. **CALLING ALL BAKERS** we could really use your help to make our tree lighting a sweet success! Please drop them off in the fellowship hall anytime before the event. Please include a note if your cookies contain common allergens like nuts, thank you!
- **Children's Christmas Pageant** - Sunday, December 21st during 10AM worship service: Join us for this heartwarming presentation by our children as they share the Christmas Story.
- **Christmas Eve Candlelight Service** - Join us on Wednesday, December 24th at 11PM at Restland Chapel for our beautiful service. Come and celebrate the birth of Christ with scripture, carols, and the warm glow of candlelight. All are welcome as we gather in this joyful worship on this holy night.
- **Brunch Church** - December 28th: Join us for a special worship service! We'll gather for a relaxed morning of praise, fellowship, and delicious brunch. Feel free to come cozy- pajamas or ugly Christmas sweaters are welcome and encouraged! Bring your favorite breakfast dish to share
- Please note that Tuesday, December 23<sup>rd</sup> will be our last day for regular **office hours** before the Christmas and New Year holidays. The church will reopen on Monday, January 05<sup>th</sup>. If you experience a pastoral emergency during this time, please contact Rev. Hannah Faye directly.







# Let us **PRAY** for:

- The family of Ruth Tonneson as they grieve her passing.
- The EH Coop as they begin searching for a new home.
- Melody Bjorklund
- Pam's health and Souk as he recovers from surgery.
- Our nation and its leaders.
- Our Session members as they continue to plan for the future.
- That KMPC would find a Christian Educator for our growing ministry
- Those traveling for the holidays.
- A friend of the congregation who is struggling with addiction and needs prayers.

The giant tree in the backyard of the manse that I have mentioned in these newsletters so many times, had to come down last week. All that remains of her is a large stump, jutting up just a few inches from the ground.

If you have no idea what I'm talking about with this tree that's totally fine. You're easing my own anxiety that I was talking too much about it too much in my pastor's note and yall would think I was crazy. But this tree never ceased to amaze me every season.

It was always the last tree to sprout and grow leaves in the spring, the first tree to turn the most fire-blazing orange in the Fall. And it seemed even then it knew it was too pretty to last and the leaves would be bare just mere weeks after her breathtaking display of color.

When Mr. Macaluso told me the tree wasn't safe to leave in the backyard I was devastated. My family has been less than concerned. In fact, Jane and her neighborhood friends use the stump as a stage. Henry designates it as home base when they play games. And all the open space in the backyard as given me a new appreciation for the pine trees that line the back of the property.

Suddenly my ideas for future gardening and landscaping layouts are swirling in my brain. But I still miss the towering giant that called 27 Ronald home long before any pastor or even house did. It feels sad but necessary all at the same time.

At the start of every Advent I feel this same twinge of sadness. Which sounds counterintuitive with everything that Advent brings. But if we remember our scriptures, the lectionary is careful to begin the season with apocalyptic scenes of rebirth and new beginnings. And God's answer to this scene is the most unexpected character of all... a baby.

## A Note from the Pastor Cont'd:



We know how the story ends before it even begins– what will become of that baby. How the world will reject and mock him. How the same man who gives his body to be broken for us in a holy eucharistic meal is born and laid to sleep in a food trough– foreshadowing what is to come.



What all of this has to do with the now missing tree in the backyard I'm not sure. In my mind it's all connected somehow – the letting go, the clearing out, the ache of losing what once felt sturdy and familiar... and the strange, surprising room that appears afterward. Advent has always been a season that asks us to hold both: the grief of what has been cut down, and the hope of what is quietly growing just beneath the surface.



That stump in the yard reminds me daily that what feels like an ending can still be a beginning. New space. New imagination. New light reaching corners that were once shaded. And if God can do all that with a felled tree turned playground stage and a home base for children... how much more can God do with the tender, cleared-out places in us?



My prayer for us this Advent is that we make room – in our hearts, in our calendars, in our weary spirits – for the unexpected ways Christ will arrive. Not always towering and obvious, but often small, surprising, and closer to the ground than we imagined.

May we welcome Him with wonder.  
May we trust that even what feels like loss can open to new life. And may the Light find us, right where we are.

Grace and peace to you this season



**With every blessing,**  
*Rev. Hannah Faye Allred*





# Kitchell KID'S



Building a foundation of faith with God's LOVE



**December 7<sup>th</sup>** - Pageant Practice and Heroes of the Nativity - Mary and Joseph

**December 14<sup>th</sup>** - Pageant Practice and Heroes of the Nativity - Shepherds and Angels

**December 21<sup>st</sup>** - Christmas Pageant Day!

December 28<sup>th</sup> and January 4<sup>th</sup> - **no church school**

**January 11<sup>th</sup>** - Epiphany! Heroes of the Nativity - The Wise Men

**Please keep praying we find a  
new Christian Educator soon!**

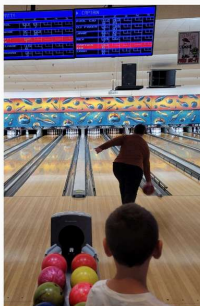
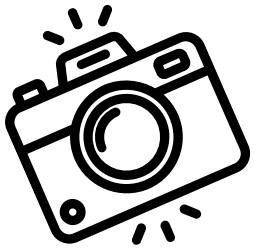
# *Getting To Know You* **IN THE SPOTLIGHT**

## **Henry Allred**

Hi I'm Henry. I'm 8 and three quarters years old. My birthday is December 28th. I was born in Oklahoma City. My favorite sports teams are: NFL- Baltimore Ravens; MLB - New York Yankees; NHL - New Jersey Devils; NBA - The Oklahoma City Thunder. My all time favorite college team is the University of Oklahoma, Boomer Sooner! I love to play football and hang out with my friends and play video games. My favorite book series right now is Diary of a Wimpy Kid. My favorite video game is MineCraft. My favorite thing about coming to church are the cookies at coffee hour. This year I am most proud of myself for making the East Hanover travel baseball team. A big dream I have for the future is to be an NFL player. In school my favorite subjects are math and gym. My least favorite subject is writing. I love to play football and baseball. I am also on St. Rose's CYO Basketball team and started wrestling for the first time this year, too. If I could create a new holiday it would be "National Stay at Home Day" when you get to stay home all day and wear your pajamas. If I could choose one superpower it would be teleportation. Something kind I did for someone recently was leaving a group of my friends to go and play with a kid who was alone. It made me feel good. I feel closest to God when I go to church. What I am looking forward to the most next year is going back to camp Johnsonburg.



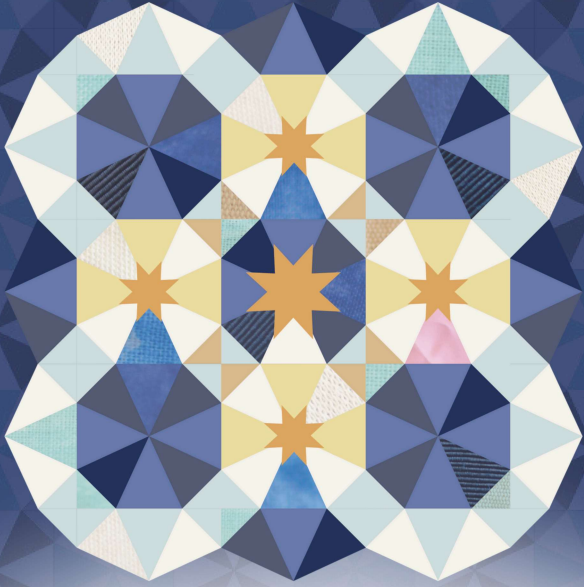




**Don't forget to send us your pictures or tag @kitchellchurch at our next event!!**



# Looking Ahead Advent



Advent is a season of endings and beginnings. As the calendar year comes to a close, a new church year rushes in. Christ's birth ushers us into new ways of living and loving—and yet, we feel the weight of many things coming to an end. The world as we know it spins madly on. May these words for the beginning renew us and remind us of the ways we are called to live out our faith. No matter what you are facing, no matter what this new day brings, let love be your beginning.

**WORDS**  
**FOR THE BEGINNING**

## Save the Dates:

**Manse Open House Christmas Party - December 05<sup>th</sup>**

**4<sup>th</sup> Annual Tree Lighting - December 12<sup>th</sup>**

**Children's Christmas Pageant - December 21<sup>st</sup>**

**Christmas Eve at Restland - December 24<sup>th</sup>**

**Brunch Church - December 28<sup>th</sup>**

**Epiphany Sunday (Star Words) - January 11<sup>th</sup>**





# KITCHELL CHURCH



CELEBRATE THE SEASON  
OF GIVING!



## How can you help?



Donate unused toys for kids  
Spread the word for Morris County Department  
of Child Protection and Permanency

### DROP-OFF LOCATION

469 Ridgedale Ave  
East Hanover, NJ

### OPERATING HOURS

Nov 23<sup>rd</sup> - Dec 14th  
Mon-Thurs 9AM-1PM



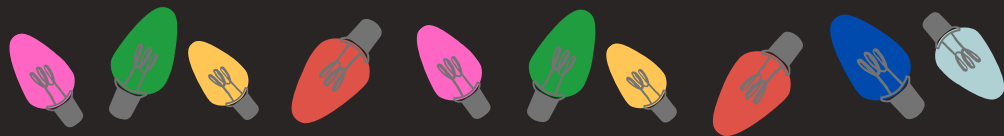
Follow us @kitchellchurch

# Kitchell Church Tree Lighting

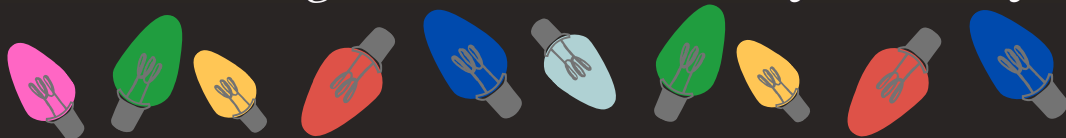


**Friday, December 12th**

469 Ridgedale Ave. at 5:30 pm



Pizza, Nuggets, Hot Cocoa, Cookies, Crafts,  
Christmas Caroling, and more. Family Friendly & **Free!**

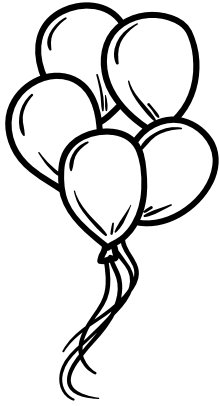


**Details at [KitchellChurch.org](http://KitchellChurch.org)**

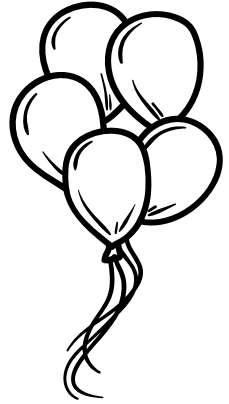


# December 2025

SUNDAY	MONDAY	TUESDAY	WEDNESDAY	THURSDAY	FRIDAY	SATURDAY
<b>7</b> Property Mtg Church School 9AM Senior Choir 9AM Worship 10AM Communion Sunday Deacons Mtg 11:30AM	1	2	3 Worship & Ed Mtg Cancelled Handbell Choir 7PM	4	5 Manse Christmas Party 6:30PM	6 AA Meeting 9:30AM
<b>14</b> Church School 9AM Senior Choir 9AM Worship 10AM Toy Drive Ends	8	9 Bible Study 1:30PM	10 Handbell Choir 7PM	11	12 04 <sup>th</sup> Annual Tree Lighting 5:30PM	<b>13</b> AA Meeting 9:30AM
<b>21</b> Church School 9AM Senior Choir 9AM Worship 10AM Christmas Pageant	15	16 Bible Study 1:30PM Last one for the year!	17 Deadline for Poinsettias Handbell Choir 7PM Senior Choir 8PM	18	19	<b>20</b> AA Meeting 9:30AM
<b>28</b> Senior Choir Off Worship 10AM Brunch Church	22	23 Bible Study Cancelled	24 Office Closed Christmas Eve at Restland 11PM Choirs will be Singing/Ringing	25 Christmas Day Office Closed	26	<b>27</b> AA Meeting 9:30AM
29 Office Closed	30 Bible Study Cancelled Office Closed	31 Handbell Choir Cancelled Office Closed New Years Eve				



# December Birthdays



*Dec 05<sup>th</sup>: Peter Brose*

*Dec 06<sup>th</sup>: Tim Bruns*

*Dec 07<sup>th</sup>: Alexandra Chasman*

*Dec 19<sup>th</sup>: Mary Lampert*

*Dec 20<sup>th</sup>: Emma Forman*

*Dec 25<sup>th</sup>: Fred Wittjohann*

*Dec 26<sup>th</sup>: Scott Peterson*

*Dec 27<sup>th</sup>: Amanda DiBartolo*

